

BOTHO UNIVERSITY ONLINE 

BOTHO
UNIVERSITY

VIBRANCE • INNOVATION • IMPACT

PROSPECTUS 2025

Globally Recognized
proudly African



VIBRANCE



INNOVATION



IMPACT

online.bothouniversity.com

#WhereEveryStudentThrives

The Botho Graduate Profile (BGP)

is a list of qualities that all Botho University students are encouraged to learn and imbibe before they graduate.



ARTICULATE

Able to communicate information eloquently, effectively and appropriately to a given audience.



COLLABORATIVE

Considerate of and able to work and communicate effectively with teams of people from different social and cultural backgrounds.



CRITICAL THINKING

Having the curiosity and open mindedness to acquire new knowledge by analyzing, reflecting on and evaluating information.



DIGITALLY LITERATE

Able to identify trustworthy information and use technology creatively and appropriately to solve problems, make decisions, and improve quality of life.



ENVIRONMENTALLY RESPONSIBLE

Committed to conserving resources and protecting the environment.



INNOVATIVE & ENTREPRENEURIAL

Able to identify opportunities and take measured risk to develop new and improved ideas, processes and products that create value.



KNOWLEDGEABLE & HARDWORKING

Understanding a field of study with the expertise, professionalism, motivation and commitment to apply the knowledge gained to solve problems and deliver quality work.



POSITIVE & CONFIDENT

Being friendly, optimistic, adaptable and resilient, and able to display healthy self-esteem, especially when interacting with others and making decisions.



SOCIALLY RESPONSIBLE

Makes decisions and takes actions ethically, with integrity, and in the best interest of society as a whole.

BGP Skills listed above are based on inputs from industry, academia, research, our context and global best practice and employability reports.

TABLE OF CONTENTS

About Us - Sub Saharan African University	4
.....	
Our Valued Partners	8
.....	
Our Programmes	9
.....	
• Faculty of Business And Accounting	10 - 14
• Faculty of Engineering And Technology	15 - 18
• Faculty of Health And Education	19 - 28
Important Admissions Information	29
.....	

“

Botho is an Ethos, a powerful and revered concept. Similar to **Ubuntu**.
"Botho" is upheld as part of Botswana's
5 National Principles - Our name
defines us.

The Spirit of Botho - I am because you
are. The possession of good qualities
associated with a good human being.

”

ABOUT US - Sub Saharan African University

BOTHO UNIVERSITY - SETTING THE STANDARD IN HIGHER EDUCATION

Botho University stands as one of Botswana's premier private institutions, renowned for its commitment to academic excellence, innovative technology-driven education, and a strong focus on industry-relevant learning. Our reputation as a leader in producing job-ready graduates has been established over 28 years of transformative education in Sub-Saharan Africa. Our affiliation with the International Finance Corporation (IFC), part of The World Bank, has solidified our place among the leading universities across the continent.

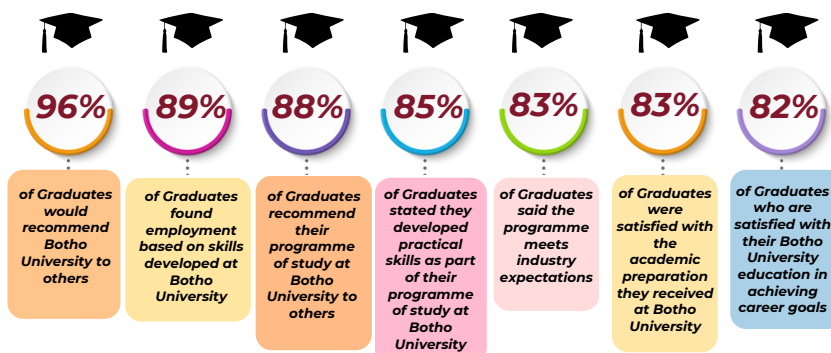
Our 2024 Graduate Tracer Study reveals that 82% of our graduates feel confident in achieving their career goals, a testament to the quality education they receive at Botho University.

Botho University 2024 Graduate Tracer Study

with guidance from



International
Finance Corporation
www.ifc.org



We take immense pride in being the only university in Botswana with campuses in four Sub-Saharan African countries: Botswana, Lesotho, Eswatini, and Namibia. Our commitment to digital education is reflected in Botho University Online, which makes our industry-aligned programs accessible to learners across the continent. All of our programs are fully accredited by the relevant regulatory authorities in each country, ensuring that we meet the highest educational standards. We are also the first institution in the region to be ISO 9001:2015 certified for quality management.

BOTHO UNIVERSITY ONLINE 

BOTHO
UNIVERSITY
VIBRANCE • INNOVATION • IMPACT



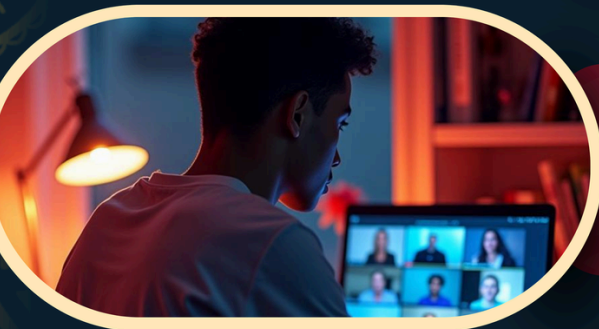
OUR **ONLINE STUDENTS** ELIGIBLE FOR
INTERNATIONAL
EXCHANGE

OUR **ONLINE STUDENTS** UNLOCK LIFE LONG

CAREER
SUPPORT



OUR **ONLINE STUDENTS** ENJOY A
CAMPUS EQUIVALENT
EXPERIENCE



*Botho University also offers fully accredited online programs of study. **#TheFutureIsDigital***

Globally Recognized
proudly African

APPLY NOW

online.bothouniversity.com

BOTHO UNIVERSITY ONLINE



BOTHO
UNIVERSITY
VIBRANCE • INNOVATION • IMPACT



WE OFFER

FLEXIBLE
PAYMENTS

SO YOU CAN FOCUS ON LEARNING

OUR ONLINE STUDENTS BUILD LASTING

ALUMNI
CONNECTIONS



START WHEN ITS RIGHT FOR YOU!

MULTIPLE ADMISSION
INTAKES



JAN | MAR | MAY | JUL | SEP | NOV

Botho University also offers fully accredited online programs of study. **#TheFuturalsDigital**

Globally Recognized
proudly African

APPLY NOW

online.bothouniversity.com

BOTHO UNIVERSITY ONLINE 

BOTHO
UNIVERSITY
VIBRANCE • INNOVATION • IMPACT



WITH YOU EVERY STEP OF THE WAY
ONGOING
EXPERT
GUIDANCE

OUR INNOVATIVE
LEARNING
MANAGEMENT
SYSTEM



OUR ONLINE STUDENTS ACCESS
EXCLUSIVE
SCHOLARSHIPS

Botho University also offers fully accredited online programs of study. #TheFutureIsDigital

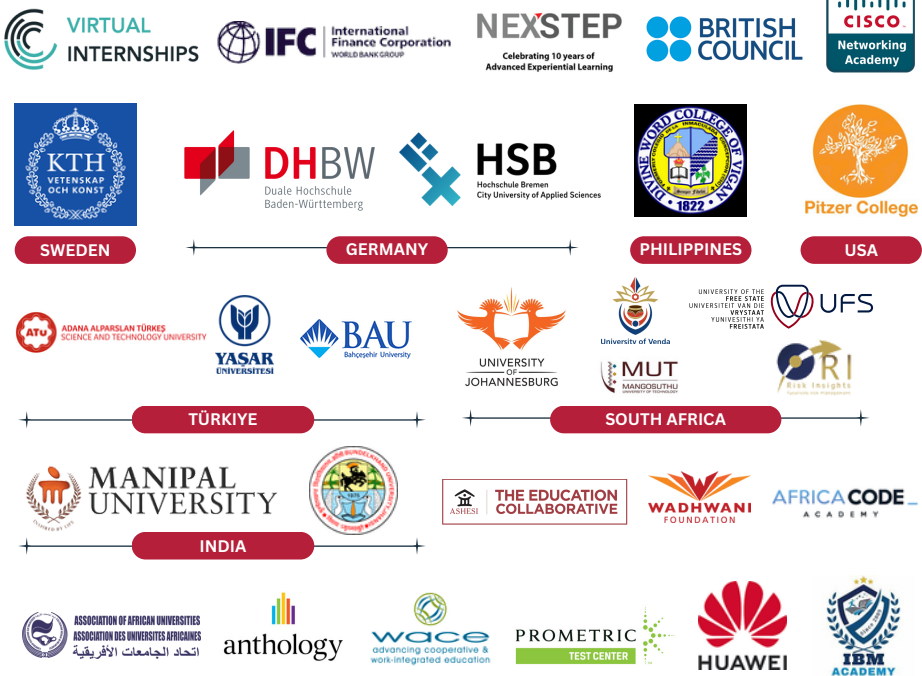
Globally Recognized
proudly African

APPLY NOW

online.bothouniversity.com

OUR VALUED PARTNERS

INTERNATIONAL PARTNERS



LOCAL PARTNERS



The list of partners is not exhaustive and subject to change

OUR PROGRAMMES



FACULTY OF BUSINESS & ACCOUNTING

Master of Business Administration (MBA)
Master of Commerce in Human Resource Management
Bachelor of Commerce in Accounting
Bachelor of Business Administration in Business Management
Bachelor of Commerce in Hospitality Management

FACULTY OF ENGINEERING AND TECHNOLOGY

Master of Science in Information Systems Management
Master of Science in Computer Science
Bachelor of Science in Data Science
Bachelor of Science in Network Security and Computer Forensics

FACULTY OF HEALTH AND EDUCATION

Master of Education in Educational Leadership and Management
Master of Education in Curriculum Design and Instruction
Master of Education in Higher Education
Postgraduate Diploma in Higher Education (PGDHE)
Bachelor of Education in Primary Education
Bachelor of Science in Hospital Administration
Bachelor of Science in Health Information Management
Bachelor of Science in Safety, Health and Environmental Management
Diploma in Occupational Health and Safety

Check our website for the latest updates on Online Learning programmes by visiting online.bothouniversity.com

FACULTY OF BUSINESS & ACCOUNTING

Master of Business Administration

Programme details:

The programme consists of 11 core (required) modules and 8 Elective Modules. The Research Methodology is a pre-requisite for the Dissertation in the MBA Programme. Some modules may be co-requisite (i.e. such modules are required to be taken together). The number at the end of the module in parenthesis indicates the credit load of the module. 1 credit is equal to 10 hours of learning (guided, inclass and independent combined); therefore a 10-credit module requires on average 100 hours of learning from the student. The MBA Programme will be Block Release and Distance Learning.

Admission criteria

1) Bachelors or Honours Bachelors Degree from a recognised institution.

2) For enquiries and more information please visit our website: www.bothouniversity.com

Graduates of this programme can:

- Manage Large Business
- Establish New Ventures
- Formulate and Implement Strategy for Small and large Scale businesses
- Manage Change and Growth in Business
- Address practical business problems
- Make key decisions for business
- Analyse data for making decisions in a Business
- Manage Business
- Manage Imports and Exports

Career Prospects:

- Accountant
- Auditors
- Educationist
- Taxation Consultants
- Finance Managers
- Accounts Consultants
- Middle Level Managers
- Accounts Clerks
- Bookkeepers

Skills Developed:

- Financial management
- Presentation
- Research
- Analytical
- Critical thinking
- Entrepreneurial
- Problem solving
- Microsoft Word, Excel, Powerpoint



SCAN ME

for detailed programme
information



FACULTY OF BUSINESS & ACCOUNTING

Master of Commerce in Human Resource Management

Programme details:

The Master of Commerce in Human Resource Management facilitates the Professional and Corporate development of Business Leaders and Aspiring Business Managers. The programme builds competence in human development, human resource planning, knowledge of social and political contexts of developments, integration of theory into practice and research. The programme achieves this by developing Graduates with Knowledge, Skills and Competencies to take on leadership roles in a range of settings to achieve effective human resource development priorities of emerging economies. The Programme is beneficial in assisting the adoption and implementation of an integrated approach to help build capacity to respond to human and social development most especially in emerging markets as well as help facilitate networks and partnerships.

Admission criteria

- 1) Bachelors or Honours Bachelors Degree from a recognised institution in Business, HRM or related areas
- 2) For enquiries and more information please visit our website: www.bothouniversity.com

Graduates of this programme can:

- Prepare financial statements
- Interpret and analyse financial information
- Interpret and apply financial standards
- Prepare and analyse budgets
- Manage cash flows
- Develop, model and manage risk
- Research on existing problems and develop solutions
- Develop business continuity plans
- Identify and evaluate sources of finance
- Appraise investment projects
- Manage finances
- Plan on taxation issues
- Develop new and innovative ideas and start own enterprises

Career Prospects:

- Accountant
- Auditors
- Educationist
- Taxation Consultants
- Finance Managers
- Accounts Consultants
- Middle Level Managers
- Accounts Clerks
- Bookkeepers

Skills Developed:

- Financial management
- Presentation
- Research
- Analytical
- Critical thinking
- Entrepreneurial
- Problem solving
- Microsoft Word, Excel, Powerpoint



SCAN ME

for detailed programme
information



FACULTY OF BUSINESS & ACCOUNTING

Bachelor of Commerce in Accounting

Programme details:

This programme helps develop student's understanding of accounting with a deeper look into taxation, auditing, assurance, commerce, finance, strategic management, etc. It is targeted at those who would like to permeate the accounting sector, commercial banking sector, investment sector, or work in public sector companies or accounting firms.

Admission criteria

1) BGCSE/equivalent with of 5 Passes including English and Mathematics.

2) Applicants in possession of a Diploma or Higher Diploma in related field may be given exemptions based on the credit point equivalency.

3) For enquiries and more information please visit our website: www.bothouniversity.com

Graduates of this programme can:

- Prepare financial statements
- Interpret and analyse financial information
- Interpret and apply financial standards
- Prepare and analyse budgets
- Manage cash flows
- Develop, model and manage risk
- Research on existing problems and develop solutions
- Develop business continuity plans
- Identify and evaluate sources of finance
- Appraise investment projects
- Manage finances
- Plan on taxation issues
- Develop new and innovative ideas and start own enterprises

Career Prospects:

- Accountant
- Auditors
- Educationist
- Taxation Consultants
- Finance Managers
- Accounts Consultants
- Middle Level Managers
- Accounts Clerks
- Bookkeepers

Skills Developed:

- Financial management
- Presentation
- Research
- Analytical
- Critical thinking
- Entrepreneurial
- Problem solving
- Microsoft Word, Excel, Powerpoint



FACULTY OF BUSINESS & ACCOUNTING

Bachelor of Business Administration in Business Management

Programme details:

This program is designed for students seeking to build a career in management, primarily in profit driven sectors. It carefully combines theoretical and practical teaching as part of its training approach, while incorporating work-related learning to ensure the production of graduates with both the knowledge and skills to succeed in the competitive business sector worldwide.

Admission criteria

1) BGCSE/equivalent with of 5 Passes including English and Mathematics.

2) Applicants in possession of a Diploma or Higher Diploma in related field may be given exemptions based on the credit point equivalency.

3) For enquiries and more information please visit our website: www.bothouniversity.com

Graduates of this programme can:

- Address practical business problems
- Make key business decisions
- Influence business strategy
- Analyse business data
- Manage and organize product portfolio
- Appraise corporate projects
- Manage small business
- Plan and implement strategic plan
- Establish new ventures
- Research and development

Career Prospects:

- Operations Manager
- Business Process Orchestration Analyst
- Business Consultant
- Business Lecturer
- Branch Supervisor
- Branch Manager
- Country Manager
- Change Management Consultant

Skills Developed:

- Understanding of facts and figures
- Computer skills
- Presentation skills
- Market intelligence
- Ability to deal with people
- Interest in starting and growing a business



SCAN ME

for detailed programme
information



FACULTY OF BUSINESS & ACCOUNTING

Bachelor of Commerce in Hospitality Management

Programme details:

This programme combines practical and theoretical learning in the Degree programme ensure that graduates are well versed in knowledge, skills and competencies required in the hospitality industry characterised by continuous changes in technology and customer motivations. The course sets a firm foundation for those aspiring to establish careers or become entrepreneurs in the hospitality industry.

Admissions Criteria

1) BGCSE/equivalent with 5 Passes including English and Mathematics.

2) Applicants in possession of a Diploma or Higher Diploma in related field may be given exemptions based on the credit point equivalency.

3) For enquiries and more information please visit our website: www.bothouniversity.com

Graduates of this programme can:

- Manage daily operations in a hotel or restaurant
- Solve day-to-day challenges within a business
- Maximize customer satisfaction for the business

- Make key business decisions
- Influence business strategy
- Analyse business data
- Manage and organize product portfolios
- Appraise corporate projects
- Create and implement strategic plans
- Establish new ventures
- Research and development

Career Prospects:

- Restaurant Managers
- Food and Beverage Managers
- Guest Relations Managers
- Front Office Managers
- Executive Housekeepers
- Rooms divisions Managers
- Reservations Managers
- Sales and Marketing Managers
- Tourism and Hospitality Consultants
- Researchers and Lecturers

Skills Developed:

- Passion for the hospitality industry
- Ability to interact with people
- Ability to be on your feet for long periods
- Understanding facts and figures
- Computer skills
- Presentation skills
- Market intelligence



SCAN ME

for detailed programme
information



FACULTY OF ENGINEERING & TECHNOLOGY

Master of Science in Information Systems Management

Programme details:

The programme is generally focused on the technical, organizational and management knowledge and skills to qualify them as Information Systems Management professionals. The curriculum is designed to have appropriate modules, both theoretical and practical, at all levels such as the introductory, intermediate, and advanced levels based on the body of knowledge for Information Systems Management. The MSc Information Systems Management programme is designed for the students through a rigorous learning process to prepare professionally trained graduates for the Industry, Education and various avenues which covers an array of contemporary concepts, methods and topics, and hence obtaining useful hands-on expertise essential within the fast-changing environment of Information Systems Management and further affording post graduates an opportunity to pursue related careers or further academic research.

Admissions Criteria

- 1) The minimum admission requirement is a bachelor's degree Honors in Computing/ Computer Science / Information Technology or any computer related field.
- 2) A Post-Graduate Diploma (NCQF level 8) in the field of study (Computing) may also meet admission requirements provided that at least 20 credits at level 8 have been allocated to research methodology within or additional to the qualification.
- 3) Applicants that do not meet the above criteria but possess relevant industry experience will be considered through recognition of prior learning (RPL).

Graduates of this programme can:

- Design and develop network architecture and ensure security of the network
- Acquire knowledge of computer crime through forensic methods.
- Process Legal requirement for collecting evidence.

Career Prospects:

- Information Technology
- Computer Forensics Analysts
- Vulnerability Security research engineer
- Digital Forensics Examiner
- Malware Media Forensics Analysts
- Forensics Auditors
- Network Security Specialists
- Computer Crime Investigators or Security Analysts

Skills Developed:

- Networking Protocols
- Network Architecture and Design
- Routing and Switching
- Network Security
- Wireless Networking
- Network Management and Monitoring
- Network Virtualisation
- Cloud Computing and Networking
- Network Troubleshooting
- Cryptography
- Operating Systems
- Programming and Scripting
- Project Management

SCAN ME

for detailed programme
information



FACULTY OF ENGINEERING & TECHNOLOGY

Master of Science in Computer Science

Programme details:

Master of Science in Computer Science is an advanced program designed to deepen understanding of computer science principles and their applications. It typically covers core areas such as algorithms, machine learning, computer networking, data warehousing, and software development. Students engage in both theoretical and hands-on learning, often culminating in a research project or dissertation. This program prepares graduates for careers in tech industries, research, or academia, equipping them with advanced skills to solve complex computing challenges and drive innovation in technology.

Admissions Criteria

- NCQF Level 7 (Bachelor's degree) or its equivalent.
- Entry through Recognition of Prior Learning in line with institutional and National policies where necessary.

Graduates of this programme can:

- Develop secure software systems.
- Integrate large-scale software systems.
- Analyse the societal impact of computer systems.
- Manage computing technology resources and projects.
- Conduct research and advance knowledge in computing.

Career Prospects:

- Senior Systems Analysts
- Lead Software Engineer
- Computer Network Manager
- Webmaster
- Manager in Information Technology
- Database Manager
- Director in Information Technology
- Database Administrator/Developer
- IT Solution Architect
- Project Engineer/Manager
- Software Engineer
- System Analyst/Consultant
- System Developer/Engineer
- Web/Mobile Applications Developer
- IT Project Manager

Skills Developed:

- Computing Research Methods
- Object-Oriented Software Engineering
- Operating Systems
- Data Warehousing
- Computer Networking and Communications
- Project management
- Machine Learning
- Web-Engineering
- Grid Computing Systems
- Information Retrieval

SCAN ME

for detailed programme
information



FACULTY OF ENGINEERING & TECHNOLOGY

Bachelor of Science in Data Science

Programme details:

This programme is concerned with extracting intelligence from data. This is done by applying cutting-edge techniques from Statistics, Mathematics and Computer Science. The techniques used to understand the modern abundance of data are at the intersection of computing and mathematics, including statistics and machine learning, and there is a high demand in the industry. Furthermore, the qualification will aid in making data-driven decisions in the bid to attain Sustainable Environment and Sustainable Economic Development.

Admissions Criteria

- 1) GBCSE/equivalent with 5 Passes including including English and Mathematics.
- 2) Applicants in possession of a Diploma or Higher Diploma in related field may be given exemptions based on the credit point equivalency.
- 3) For enquiries and more information please visit our website: www.bothouniversity.com

Graduates of this program can:

- Apply data-driven models in various fields like finance, biology, health, education, agriculture, and many other fields
- Communicate in technical and non-technical terms concepts of Data Science in different sectors of the economy
- Develop new data processing models
- Apply developed models to various problems
- Develop multiple programming languages used for expressing solutions
- Safeguard the ethical use of data in all aspects of their profession
- Work effectively in a team
- Communicate effectively
- Develop research skills
- Develop entrepreneurial skills

Career Prospects:

- Data Analyst
- Data Mining Engineer
- Data Architect
- Data Scientist
- Senior Data Scientist
- Business Intelligence Analyst
- Machine Learning Scientist
- Clinical Data Managers

Skills Developed:

- Statistical analysis and computing
- Machine learning
- Deep learning
- Processing large data sets
- Data visualisation
- Data wrangling
- Mathematics
- Programming



SCAN ME

for detailed programme
information



FACULTY OF ENGINEERING & TECHNOLOGY

Bachelor of science in Network Security and Computer Forensics

Programme details:

This programme equips students with a strong understanding of computer technology and networks as well as the skills and discipline required to protect these systems and data from malicious manipulation and attacks. With the acquired knowledge they can effectively address the rising need for cyber security in the corporate setting as technology continues to advance and get increasingly adapted in various processes.

Admissions Criteria

1) BGCSE/equivalent with 5 Passes.

2) For enquiries and more information please visit our website: www.bothouniversity.com

Graduates of this programme can:

- Design and develop network architecture and ensure security of the network
- Acquire knowledge of computer crime through forensic methods.
- Process Legal requirement for collecting evidence.

Career Prospects:

- Information Technology
- Computer Forensics Analysts
- Vulnerability Security research engineer
- Digital Forensics Examiner
- Malware Media Forensics Analysts
- Forensics Auditors
- Network Security Specialists
- Computer Crime Investigators or Security Analysts

Skills Developed:

- Networking Protocols
- Network Architecture and Design
- Routing and Switching
- Network Security
- Wireless Networking
- Network Management and Monitoring
- Network Virtualisation
- Cloud Computing and Networking
- Network Troubleshooting
- Cryptography
- Operating Systems
- Programming and Scripting
- Project Management

SCAN ME

for detailed programme
information



FACULTY OF HEALTH & EDUCATION

Master of Education in Educational Leadership and Management

Programme details:

The Master of Educational Leadership and Management programme focuses on training and preparing learners for a range of high level careers that require educational leadership and management skills, competencies and knowledge needed by the learners to become the professionals that they aspire to be. With a master's degree in educational leadership and management, the prospective graduates could secure good jobs in the education, social services, training, and management fields. The programme comprises of twelve core modules and three elective modules. Students must complete 240 credits before graduating from the programme. The research methodology module is a pre-requisite for the research proposal and dissertation modules. Learners are expected to pass research methods before being registered for the dissertation module. MEDLM programme is a two-year programme and will be delivered through Distance and Blended Learning modes. The programme can be studied by both national and international candidates.

Admissions Criteria

- 1) Any recognised Bachelor's Degree (NCQF Level 7)
- 2) A Post-Graduate Diploma (NCQF Level 8) in the same or a cognate field of study.
- 3) For enquiries and more information please visit our website www.bothouniversity.com

Graduates of this programme can:

- Conduct independent inquiry into educational leadership and training or development, to contribute meaningful new knowledge to the field of educational leadership and management.
- Participate in educational leadership activities to expand knowledge of professional practice and enhance own competencies and performance.
- Provide leadership and technical support in the professional development of peers and other practitioners to promote quality in Educational Leadership
- Evaluate professional practice standards, relevant statutes, and regulations to inform the delivery of quality services in accordance with established code of practice.

Career Prospects:

- Teachers at the Primary and Secondary education levels
- Lecturers at the Tertiary education level
- Training and Development Managers
- Postsecondary Education Administrators
- Education Officers and Managers
- Principals of schools
- School Inspectors
- Instructional Coordinators
- Educational costs and financial analysts
- Education Policy Analysts
- Education Policy makers
- Community Service Leaders
- Researchers
- Quality and Strategic Management Experts
- Human Resources Officers and Managers

Skills Developed:

- Innovative Leadership and Management skills
- Research skills
- Problem solving skills
- Critical and analytical thinking skills
- Conflict Management skills
- Ability to work innovatively and in teams
- Good time management skills
- Presentation skills

SCAN ME

for detailed programme information



Master of Education in Curriculum Design and Instruction

Programme details:

The master of Education in Curriculum Design and Instruction focuses on training learners to become teachers in schools and lecturers at institutions of higher learning, curriculum designers and developers, curriculum reviewers, analysts, evaluators, researchers and curriculum experts in any education related organisation. The programme has an educational technology module in every semester, showing the contemporary nature of this particular programme. The programme is made up of eleven core modules and six elective modules. Prospective students are expected to choose two elective modules from the six elective modules, while all core modules are compulsory for all students. Students must complete 240 credits before graduating from the programme, 210 credits cover the compulsory modules, while 30 credits cover the elective components. The research methodology module is a prerequisite for the dissertation module. Learners are expected to pass the research methods module before being registered for the dissertation module. MEDCI programme is a two-year programme and will be delivered through Distance and Blended Learning modes. The programme can be studied by both national and international candidates.

Admissions Criteria

- 1) Any recognised Bachelor's Degree (NQF Level 7)
- 2) A Post-Graduate Diploma (NQF Level 8) in the same or a cognate field of study.

Graduates of this programme can:

- Demonstrate an understanding of learning, teaching and assessment concepts
- Show a clear understanding of curriculum development theories.
- Interpret sociological, philosophical, historical and psychological foundations of curriculum, on curriculum design and development.
- Apply knowledge of Microsoft Windows to manage electronic files and folders using applications such as MS Word, MS Excel, Outlook, PowerPoint and Access as tools for teaching. Manage computer and other related resources in their areas of operations
- Develop curricula that address the current needs of society.
- Execute knowledge of educational technology and e-learning to develop and implement activities that promote open, distance and mobile learning
- Implement different principles and practices of curriculum and assessment to inform and guide effective implementation of curriculum and assessment of student's learning.

- Compare the different models of curriculum evaluation in their evaluation of different curricula.
- Analyse curriculum in terms of how it is unpacked into its component parts (e.g. learning, teaching, knowledge, resources), vis-vis evaluating how the parts fit together, in terms of focus and coherence, checking underlying beliefs and assumptions as a way of understanding the curriculum plan better.
- Demonstrate advanced understanding of the research processes and procedures applicable to curriculum development and instruction.
- Design processes of assessment and moderation of students' work
- Demonstrate a deep understanding of the theories and principles that inform effective student learning and be able to translate theory into practice

Career Prospects:

- Secondary school teacher
- Lecturer at the Tertiary Education level
- Curriculum designer and developer
- Curriculum reviewer and evaluator
- Curriculum analyst
- Researcher
- Inspector of Education
- Admissions Officer
- Curriculum Planner
- Head of schools and colleges
- Assessor and Moderator
- Curriculum and Educational Technology Expert

Skills Developed:

- Planning and developing curriculum
- Ability to critically analyse and develop curriculum
- Good presentation skills
- Ability to apply educational technology in curriculum development and implementation
- Critical thinking, innovative and problem solving skills
- Research skills
- Good time management and leadership skills
- Ability to work in teams

SCAN ME

for detailed programme information



FACULTY OF HEALTH & EDUCATION

Master of Education in Higher Education

Programme details:

The Master of Education in Higher Education (MEDHE) is a teaching qualification which prepares learners for a career in the teaching profession. Through this programme, the learners will be equipped with the knowledge, skills and competencies to enable them demonstrate a deep understanding of the pedagogy, assessment and moderation in education, curriculum design and instruction, and quality frameworks in higher education. The programme consists of 9 core (required) modules and 3 elective modules. Some modules may have pre-requisites. The research module is a prerequisite for the dissertation module. This programme is a teaching qualification therefore, all prospective learners in the programme are expected to do their practical teaching exercise before graduation from the programme. MEDHE programme is a two-year programme and will be delivered through the Blended and Distance Learning modes. The programme can be studied by both national and international students.

Admissions Criteria

1) Applicants are expected to have completed a Bachelors Degree, preferably up to Honors level from a recognised institution.

2) For enquiries and more information please visit our website: www.bathoUniversity.com *Please note that this programme is a teaching qualification which prepares learners to become qualified and professional teachers therefore, all students in this programme must do their practical teaching (Teaching Pr

Graduates of this programme can:

- Evaluate and apply teaching, learning, assessment and moderation processes in higher education teaching and learning.
- Analyse the philosophical, psychological and sociological issues in education.
- Design high-quality multimedia e-learning solutions based on sound pedagogy and a detailed understanding of the learner.
- Analyse quality assurance methods employed in higher education settings.
- Design curriculum models and apply them to relevant teaching situations including planning lessons and practice teaching in a higher education environment.

- Examine the changing role of a teacher and the role of Higher Education in the contemporary society and reflect on teaching and learning issues in higher education.
- Examine the governance, leadership and management structures in higher education institutions.
- Demonstrate lifelong research skills that will empower them to continually seek and apply new knowledge throughout their career.
- Evaluate the behaviour of individuals in relation to their jobs, their work groups and their organizations.
- Demonstrate a deep understanding of the elements of special needs education in relation to teaching students with special needs.

Career Prospects:

- Higher Education Lecturer
- Education Administrator
- Quality Assurance Manager
- Assessment Manager
- Student Affairs Officer /Manager
- Education Manager and Leader
- Researcher
- Educational Planner and Policy Analystist
- Education Officer and Manager

Skills Developed:

- Pedagogical Knowledge and Skills
- Presentation Skills
- Listening skills
- Problem solving skills
- Good classroom management skills
- Interactive teaching skills and patience
- Critical thinking skills
- Good leadership and management skills
- Research skills
- Ability to work innovatively and in teams
- Good time management skills
- Good oral and written communication skills

SCAN ME

for detailed programme
information



FACULTY OF HEALTH & EDUCATION

Postgraduate Diploma in Higher Education

Programme details:

The Post Graduate Diploma in Higher Education (PGDHE) is a teaching qualification which prepares learners for a career in the teaching profession. Through this programme, the learners will be equipped with the knowledge, skills and competencies to enable them demonstrate a deep understanding of the pedagogy, assessment and moderation in education, curriculum design and instruction, and diversity among learners in education. The programme consists of seven core (required) modules and three elective modules. Some modules may have pre-requisites. This programme is a teaching qualification therefore, all prospective learners in the programme are expected to do their practical teaching exercise before graduation from the programme. PGDHE programme is a one –year programme and will be delivered through the Blended and Distance Learning modes. The programme can be studied by both national and international students.

Admissions Criteria

1) A Bachelor's Degree from a recognised University (NQCF Level 7) **OR**

2) A Bachelor's Degree and a Postgraduate Certificate in Education. **OR**

3) A Bachelor's Degree and a Postgraduate Certificate in Higher Education will be an added advantage **OR**

4) A 120 Credit Level 7 Advanced Diploma in a cognate specialisation

5) For enquiries and more information please visit our website: www.bothouniversity.com *Please note that this programme is a teaching qualification which prepares learners to become qualified and professional teachers therefore , all students in this programme must do their practical teaching (Teaching Practice / PPA2 module) in order to graduate .

Graduates of this programme can:

- Demonstrate an understanding of the issues, theories and principles that underpin the curricular and pedagogical practices in Education.
- Demonstrate the ability to select and use appropriate technology for integration in the classroom to support the teaching and learning .
- Design assessment instruments that appropriately capture the students' level of achievement in relation to the set goals and objectives.

- Demonstrate the ability to address diversity of individual needs through differentiation of content and delivery process in higher Education.
- Demonstrate lifelong research skills that will empower them to continually seek and apply new knowledge throughout their career.
- Apply learning, teaching and assessment practices through the theory and practice of quality teaching and learning principles
- Evaluate the leadership and management structures in educational institutions to ensure effective attainment of institutional goals and objectives.

Career Prospects:

- Higher Education Lecturer
- School Teacher
- Education Administrator
- Quality Assurance Manager
- Assessment Manager
- Student Affairs Officer /Manager
- Education Manager and Leader
- Researcher
- Curriculum developer and Implementer
- Educational Planner and Policy Analyst
- Education Officer and Manager

Skills Developed:

- Pedagogical Knowledge and Skills
- Presentation Skills
- Listening skills
- Problem solving skills
- Good classroom management skills
- Interactive teaching skills and patience
- Critical thinking skills
- Good leadership and management skills
- Research skills
- Ability to work innovatively and in teams
- Good time management skills
- Good oral and written communication skills

SCAN ME

for detailed programme information



FACULTY OF HEALTH & EDUCATION

Bachelor of Education in Primary Education

Programme details:

The Bachelor of Education (Primary Education) programme offered at Botho University focuses on training and preparing learners for a range of valuable careers that require educational skills, competencies and knowledge needed by the learners to become the professionals that they aspire to be. The programme is designed for both pre-service and in-service teachers with specializations in English language and

Mathematics. The programme is specifically designed to align with current policy initiatives regarding retooling and re-skilling teachers, as well as preparing fresh entrants into the teaching profession. With a bachelor's degree in primary education, prospective graduates could secure good jobs in the education, social services, training, and research fields.

Admissions Criteria

1) BGCSE/equivalent.

2) For enquiries and more information please visit our website: www.bothouniversity.com

Graduates of this programme can:

- Master the art of student -centered learning and teaching using modern technologies.
- Competently apply 21st century teaching and learning approaches.
- Conduct action research into the areas of primary education with a focus in English language, Mathematics and Science.
- Pursue continuous professional development in educational activities to expand their knowledge of professional practice.
- Demonstrate the ability to effectively assess learning.
- Apply problem solving skills in the different areas of specializations of primary education.
- Be eligible to register with professional bodies both at local and international levels.
- Demonstrate understanding of effective pedagogical practices in primary education.

Career Prospects:

- Teachers of Basic Education
- Remedial Teachers
- Specialist Subject Teachers of Basic Education
- Education Researchers
- Curriculum Development and Evaluation Officers
- Education Officers
- Education Counsellors
- School Inspectors
- Instructional Coordinators
- Language Interpreters
- Basic Education Policy Analysts
- Basic Education Policy Developers
- Basic Education Community Service Leaders

Skills Developed:

- Written and verbal communication skills
- Listening skills
- Problem solving skills
- Good classroom management skills
- Interactive teaching skills and patience
- Ability to relate well with, and teach learners with learning difficulties
- Ability to teach mixed- ability learners
- Critical thinking skills
- Good leadership and management skills
- Expertise in specific subjects of specialization
- Ability to work innovatively and in teams
- Good time management skills

SCAN ME

for detailed programme
information



FACULTY OF HEALTH & EDUCATION

Bachelor of Science in Hospital Administration

Programme details:

This programme focuses on equipping students with the knowledge and skills required to effectively manage healthcare facilities and services. This program combines business management principles with a deep understanding of the healthcare industry. Graduates are prepared for diverse roles within the healthcare sector, ensuring the efficient and effective operation of hospitals and other healthcare facilities.

Admissions Criteria

1) BGCSE/equivalent with 5 Passes.

2) For enquiries and more information please visit our website: www.bothouniversity.com

Graduates of this programme can:

- Be equipped with knowledge of business, healthcare management and leadership
- Healthcare Economics; strategic planning and healthcare systems
- Provide insights into healthcare systems, financial management, and human resources
- Be prepared to lead and navigate the complexities of healthcare organizations



Career Prospects:

- Health manager
- Office manager
- Practice administrator
- Program administrator/Manager
- Healthcare Administrator
- Healthcare Management Practitioner
- Clinical Management
- Management Consultant
- Health Insurance Professional
- Health Information Manager
- Public Health Professional
- Managed Care Analyst
- Hospital Director of Admitting
- Pharmaceutical Sales Manager
- Health IT manager

Skills Developed:

- Healthcare Knowledge
- Administrative and Organizational Skills
- Communication Skills
- Leadership and Management
- Financial Management
- Health Information Management
- Quality Improvement and Patient Safety
- Human Resources Management
- Strategic Planning
- Ethical Decision-Making
- Interpersonal Skills
- Public Health Knowledge
- Regulatory Compliance
- Crisis Management
- Technology Proficiency

SCAN ME

for detailed programme
information



FACULTY OF HEALTH & EDUCATION

Bachelor of Science in Safety, Health and Environmental Management

Programme details:

This programme will equip students with skills that will empower and capacitate them with abilities to penetrate the industrial market and atmospheres, they can engage in safety, health, and environmental consultancy as well as work as Safety, Health, and Environmental officers and managers. Additionally, the graduates may acquire positions as Environmental Policy analysts as well as OHS trainers, inspectors, practitioners, and assessors. In academic progression, this qualification may work as a baseline entry qualification into various fields of vertical progression towards postgraduate qualifications like Environmental Management, Risk and Safety Management, Public Policy and Health and any other relevant field as may be fit.

Admission criteria:

1) BGCSE/equivalent with 5 Passes including English, Mathematics/Statistics and Science with a credit.

2) Applicants in possession of a Diploma or Higher Diploma in related field may be given exemptions based on the credit point equivalency.

3) For enquiries and more information please visit our website: www.bothouniversity.com



Graduates of this programme can:

- Demonstrate knowledge and understanding of concepts of Occupational Safety, Health and Environmental Management
- Conduct accident/incident investigations
- Critically and comprehensively analyse Safety, Health, and Environmental risks at the workplace and external environments
- Develop practical, sustainable, cost-effective, and environmentally friendly solutions and alternatives in addressing challenges on safety, health, and environmental management at the workplace and beyond
- Formulate programs with a mandate to drive environmental sustainability for safe, sustainable and healthy human capital
- Investigate the effects of exposures to occupational health, safety and environmental stressors
- Engage in academic debates and research forums on issues addressing Safety, Health and Environmental Management

Career Prospects:

- Safety, Health and Environment Representatives
- Occupational Health and Safety Management Consultants
- Safety, Health and Environment Managers and officers
- Safety, Health and Environment Policy Analyst and Developers
- Safety, Health and Environment Officers
- Environmental Officers
- Environmental Managers

FACULTY OF HEALTH & EDUCATION

Bachelor of Science in Safety, Health and Environmental Management (Contd..)

Career Prospects Continuation.....

- Risk Control Officers
- Risk Control Managers
- Loss Control Officers
- Loss Control Managers
- Safety Officers
- Safety Managers
- Safety Auditors
- Trainers in Occupational Health and Safety Management
- Administrators in Occupational Health and Safety and related fields
- Human Resources officers in Occupational Health and Safety and related fields
- Industrial and Environmental Assessors
- Safety Health Assessors
- Occupational Health and Safety (OHS) Inspector
- Health and Safety Practitioner
- Lecturer / Academic Officer
- Environmental Control/Protection Officer
- Industrial Hygienist
- Environmental Impact Assessment Officer/Specialist
- Occupational Health and Safety Management Researcher

Skills Developed:

- Communication skills
- Strong personal and people skills
- Problem-solving skills
- Attention to detail.
- Energetic and an intense desire to learn.
- Enthusiasm and dedication
- Critical thinking skills



SCAN ME

for detailed programme
information



FACULTY OF HEALTH & EDUCATION

Bachelor of Science in Health Information Management

Programme details:

This programme combines Science, Business, and Information Technology to ensure that students who undertake it come out furnished with the necessary skills they will need to work in middle to senior management grades in clinical and hospital settings or physicians' offices as Health Data & Information Managers, Bio Statisticians, Medical Informaticians, Data Quality Managers, Researchers, and Public Health Information Managers or Officers.

Admissions Criteria

1) GBCSE/equivalent with 5 Passes including English, Mathematics and Biology/Double Sciences.

2) Applicants in possession of a Diploma or Higher Diploma in related field may be given exemptions based on the credit point equivalency.

3) For enquiries and more information please visit our website: www.bothouniversity.com

Graduates of this programme can:

- Build effective systems to collect, generate, organise, collate, analyse, interpret and disseminate health related data
- Organise and present health related information for policy, planning and for operations management of the health sector
- Design data collection tools/instruments
- Conduct special studies/evaluations on health information areas
- Develop protocols/guidelines for health information management
- Develop and manage a health informatics infrastructure
- Develop and administer medical databases
- Ensure privacy and ethical practices when managing patient data
- Carry out medical transcription
- Carry out coding of diseases and drugs using ICD 10 or later standards

Career Prospects:

- Health Data & Information Management Officer/Managers
- Medical Informatician
- Data Quality Manager & Researcher
- Public Health Information Managers/ Officers
- Inpatient and Outpatient HIM Coder & Coding Educator
- Director – Coding Operations Hospital
- HIM Analyst/Coder
- HIM Programme Director
- Medical Coding Manager
- HIM Consultant
- HIM Practice Leader Operations
- Health Information Services Manager
- Insurance Manager
- Hospital Administrator

Skills Developed:

- Computer skills
- Professional writing
- Presentation skills
- Data collection and analysis skills
- Problem-solving skills
- Creative, critical, logical and analytical thinking skills
- Team building and management skills

SCAN ME

for detailed programme information



FACULTY OF HEALTH & EDUCATION

Diploma in Occupational Health and Safety

Programme details:

This programme is intended to produce individuals with the competence to identify workplace hazards and implement appropriate mitigation and preventive strategies to achieve a compliant and sustainable OHS system within the context of established codes of practice and relevant legislative framework. The qualification will render the beneficiaries eligible for registration and accreditation with relevant national, regional, and international professional bodies.

Admissions Criteria

1) BCCSE/equivalent.

2) For enquiries and more information please visit our website: www.bothouniversity.com

Graduates of this programme can:

- Carry out a Hazard Identification and Risk Assessment
- Conduct accident/incident investigations
- Provide leadership and training support to the organization and other practitioners to promote a culture of health and safety.
- Develop sound hazard control and monitoring strategies
- Contribute to the advancement of the OHS profession

Career Prospects:

- Risk Control Officer
- Loss Control Officer
- Safety Officer
- Safety Auditor
- Occupational Health and Safety Management Consultant
- Safety, Health and Environment Officer

Skills Developed:

- Adaptability and flexibility
- Energetic and an intense desire to learn
- Passion for OHS
- Highly organised and effective decision making
- Communication and networking expertise
- Attention to Detail and ability to listen
- Internet skills
- Language proficiency and cultural sensitivity
- Enthusiasm and dedication



SCAN ME

for detailed programme
information



IMPORTANT ADMISSIONS INFORMATION

Points	UK IGCSE, UK COSC, Botswana BCCSE, Lesotho LGCSE, Eswatini SCCSE, Namibia NSSC Ordinary, Namibia NSSC O-Level, South Africa Senior Certificate SC	UK GCSE/GC E O-Level	South Africa NSC	West Africa WASSCE/SSSCE/CBCE	UK GCE AS-Level, Namibia NSSC AS-Level, South Africa Senior Certificate HG	IBDP Standard-Level	UK HIGCSE, Namibia NSSC Higher	UK GCE A-Level	IBDP Higher-Level	Points
12								A	7	12
11								B	6	11
10					A, a	7	1	C	5	10
9					B, b	6	2	D	4	9
8	A*, A	A*, A, 9, 8, 7	A+, A, 7	A1	C, c	5	3	E	3	8
7	B	B, 6, 5	B, 6	B2, B3	D, d	4			2	7
6	C	C, 4	C, 5	C4, C5, C6	E, e	3	4	N, O, Sub	1	6
5	D	D, 3	D, 4	D7		2				5
4	E	E, 2	E, 3	E8						4
3										3
2										2
1										1
0	F, G, U	F, G, U, 1	F, G, 2, 1	F9	F, f	1	U			0

1. Applying to Botho University

Before applying to Botho University, students are encouraged to take time out to familiarise themselves with all the programmes on offer. Applicants must meet all the relevant minimum requirements for the programme of study they wish to study. It is also important for applicants to assess whether the programme they choose interests them and that they want to make a career out of it. Our friendly Admission Team Counsellors will provide information needed about the programmes and assist applicants to make informed choices. Details on programmes are available on our website:

www.bothouniversity.com

2. How to calculate points

The admission point system is used to measure your academic achievement based on your school-leaving results. Your school-leaving subject grades or percentages are converted into points as per the table above and based on your qualification. These points are added up to arrive at the number of points you have obtained.

3. Important points to remember when applying

- All students can apply in person or using the online application form available on the website. Please read the "Steps to Apply" document available on the application portal before applying.
- Clear certified copies of all relevant educational certificates.
- Clear certified copies of passport/identity card.
- Please read the Fee Structure and Policy document available on the website before applying.
- Should you have any doubts on the application process please contact our admissions department for further assistance.

SCAN ME

for detailed programme information



**SCAN HERE TO
SUBMIT YOUR
APPLICATION**

BOTHO UNIVERSITY ONLINE

BOTHO
UNIVERSITY
VIBRANCE • INNOVATION • IMPACT

Botho University also offers fully accredited online programs of study. #TheFutureIsDigital

BACHELORS DEGREES

- BCom in Accounting
- BBA in Business Management
- BSc Network Security and Computer Forensics
- BSc Data Science
- BCom in Hospitality Management
- BSc in Health Information Management
- BSc Hospital Administration
- Diploma in Occupational Health and Safety
- BEd in Primary Education

MASTERS & POST GRADUATE DEGREES

- PGDHE (Post Graduate Diploma in Higher Education)
- Master of Business Administration
- MCom in Human Resource Management
- MSc Information Systems Management
- MSc Computer Science
- MEd in Higher Education
- MEd in Curriculum Design and Instruction
- MEd in Educational Leadership and Management

Globally Recognized
proudly African

APPLY NOW

online.bothouniversity.com

