

BOTHO UNIVERSITY ONLINE 

BOTHO
UNIVERSITY
VIBRANCE • INNOVATION • IMPACT

PROSPECTUS 2025



Globally Recognized
proudly African



VIBRANCE



INNOVATION



IMPACT

online.bothouniversity.com

#WhereEveryStudentThrives

The Botho Graduate Profile (BGP)

is a list of qualities that all Botho University students are encouraged to learn and imbibe before they graduate.



ARTICULATE

Able to communicate information eloquently, effectively and appropriately to a given audience.



COLLABORATIVE

Considerate of and able to work and communicate effectively with teams of people from different social and cultural backgrounds.



CRITICAL THINKING

Having the curiosity and open mindedness to acquire new knowledge by analyzing, reflecting on and evaluating information.



DIGITALLY LITERATE

Able to identify trustworthy information and use technology creatively and appropriately to solve problems, make decisions, and improve quality of life.



ENVIRONMENTALLY RESPONSIBLE

Committed to conserving resources and protecting the environment.



INNOVATIVE & ENTREPRENEURIAL

Able to identify opportunities and take measured risk to develop new and improved ideas, processes and products that create value.



KNOWLEDGEABLE & HARDWORKING

Understanding a field of study with the expertise, professionalism, motivation and commitment to apply the knowledge gained to solve problems and deliver quality work.



POSITIVE & CONFIDENT

Being friendly, optimistic, adaptable and resilient, and able to display healthy self-esteem, especially when interacting with others and making decisions.



SOCIALLY RESPONSIBLE

Makes decisions and takes actions ethically, with integrity, and in the best interest of society as a whole.

BGP Skills listed above are based on inputs from industry, academia, research, our context and global best practice and employability reports.

TABLE OF CONTENTS

About Us - Sub Saharan African University	4
.....	
Why Choose Us?	6
.....	
The Botho University Online (BUO) Advantage	8
.....	
Our Valued Partners	9
.....	
Our Programmes	
.....	
• Faculty of Business And Accounting	11
• Faculty of Engineering And Technology	16
• Faculty of Health And Education	20
Important Admissions Information	26
.....	
Nurturing Student Success - Our Employability Services	27



ABOUT US - Globally Recognized, Proudly African



CREATING IMPACT ACROSS
12 OUT OF 17
SDG's



Botho University is a high quality provider of quality education in sub saharan Africa. Our origins trace back to 1997, when the institution was established as an IT training institution. Since then, technology has remained the cornerstone of our academic programs and administrative activities, ensuring that our students are equipped with the skills necessary to thrive in a rapidly evolving global landscape and graduate with a high level of digital literacy. With physical campuses in Botswana, Lesotho, Eswatini, and Namibia, Botho University offers high-quality academic programs that are accredited by the relevant regulatory bodies in each country. With our reputation as being one of the one of the most technology advanced education providers in the regions where we operate, we leverage the power of technology to provide flexible online learning opportunities, through Botho University Online - thus enabling students across Africa to access top-tier education.

Botho University is the first institution in Africa to embark on the Digital 4 Tertiary Education Project (D4TEP) under the International Finance Corporation (IFC), the financial arm of The World Bank. The results prove Botho University pioneering efforts with infusing technology into education in the regions we operate in. This also underscores our ability to offer high quality education using our digital capabilities, through Botho University Online.

THE DIGITAL FOR TERTIARY EDUCATION PROGRAM (D4TEP) BY IFC AND DELOITTE CONSULTING

Examined and accelerated Botho's digital transformation to meet evolving needs.

D4TEP REPORT HIGHLIGHTS:

Proven Success: Botho's ICT story showcases early digital adaptation across all university operations.

Pandemic Efficiency: University digitization has been crucial for success in challenging times.

Tech-Ready Workforce: Every employee is effectively equipped with essential tech skills.

Career Preparedness: Strong strategies and networks prepare students for future careers.

Inclusive Education: Botho embraces inclusivity, minimizing barriers for all learners.

*For more details on our
Sustainability Social
Impact Report please scan
(QR Code)*



ABOUT US - Globally Recognized, Proudly African

Botho University Online Academic Programs:

Botho University offers a wide range of online programs from certificate through to master's level, with plans to expand into doctoral programs in the near future. These programs are delivered across three main faculties:

- **Faculty of Business & Accounting**
- **Faculty of Engineering and Technology**
- **Faculty of Health and Education**

Our curriculum is carefully designed to meet the needs of the modern job market, combining technological expertise with relevant industry knowledge.

A Vision for the Future

The university's 2023-2027 strategy is guided by the principles of Vibrance, Innovation, and Impact. These key themes ensure that Botho University remains a dynamic and forward-thinking institution, committed to providing a transformative educational experience.

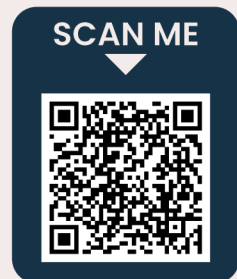
Core Values

At the heart of Botho University is a commitment to Integrity, Excellence, and Inclusiveness. These core values drive our mission to produce well-rounded, entrepreneurial, and globally competitive graduates. Our students graduate with the knowledge, skills, and competencies needed to contribute meaningfully to the economy, fostering sustainable growth and development.

Commitment to Quality

Botho University is a certified institution under the BOS ISO 9001:2015 standard, demonstrating our adherence to international standards of quality assurance. This commitment to excellence ensures that our graduates are well-prepared to make an impact in their respective fields, and many are already playing leading roles in transforming local and regional economies.

*For more details on our
Sustainability Social
Impact Report please scan
(QR Code)*



WHY CHOOSE BOTHO UNIVERSITY ONLINE?

Blackboard[®]

turnitin

anthology

CampusNexus

emerald PUBLISHING

EBSCOhost

ProQuest
Start here.

dawsonera

JSTOR

At Botho University Online (BUO), we offer you a unique and enriching educational experience designed to help you achieve your career goals and succeed in your personal development. Here's why choosing us will give you an edge:

1. Globally Recognized Education

Our programs are globally recognized and have been developed with input from industry experts to ensure they meet international standards. Botho University Online is designed with the African context in mind, making it highly relevant to the unique needs of African learners, while still offering the international relevance needed to succeed in the global job market.

2. State-of-the-Art Learning Technology

With over 27 years of investment in cutting-edge technology, Botho University Online provides learners with access to a robust learning platform. This includes our Learning Management System (LMS), eBooks, online journals, and a fully integrated ERP system, ensuring a smooth and efficient learning journey.

3. Access to Blackboard Learning Management System

As a Botho University Online learner, you'll have access to Blackboard, the world-leading Learning Management System (LMS) used extensively for all teaching and learning activities. Blackboard provides a comprehensive platform for extensive engagement, discussion forums, assignments, projects, and all official communication, ensuring an interactive and streamlined learning experience.

3. Flexible Enrollment Options

We offer six enrollment periods a year (January, March, May, July, September, and November) to give you the freedom to start your studies when it works best for you. Whether you're looking to begin your education at the start of the year or later, Botho University Online accommodates your schedule.

4. Ongoing Expert Support

From your first day to your last, you'll have access to academic experts and dedicated support teams. Our BUO learners are guided every step of the way, ensuring they feel confident, supported, and ready to succeed.



WHY CHOOSE BOTHO UNIVERSITY ONLINE?

5. Access to Extensive Online Library Resources

Botho University Online learners have full access to a wealth of library resources to support their research, assignments, projects, and academic studies. Through our eBooks, online journals, and other digital resources, you can easily access high-quality academic content anytime, anywhere, ensuring you have the materials you need to excel in your coursework.

5. Counseling and Well-Being Support

We understand that learning online can sometimes feel isolating. That's why Botho University Online offers academic and psycho-social counseling services to help you stay on track. Whether you need academic guidance to keep up with your coursework or emotional support to manage the challenges of studying online, we provide the resources to ensure you succeed both academically and personally. BUO learners gain access by booking our trained and caring counsellors for online counselling sessions.

6. Career Development Opportunities

At BUO, education doesn't stop at graduation. Our Student and Alumni Affairs Department offers a range of career development opportunities, including workshops, webinars, professional certifications, and international scholarships. As a BUO learner, you'll gain access to lifetime career support, helping you unlock new opportunities as your career progresses.

7. Global Study Exchange Opportunities

Expand your horizons with our study abroad programs in destinations like Sweden, Germany, Turkey, the USA, and India. Eligible learners can take advantage of international exchange programs, gaining valuable global exposure while pursuing their studies.

8. Access to Campus Facilities

As an online learner, you are not limited to virtual learning alone. Botho University Online learners enjoy the unique benefit of accessing campus facilities in countries where we have physical campuses. This means you can visit the campus for resources, study spaces, and support whenever you need, ensuring you experience the same level of access and opportunities as on-campus students.

9. Health & Safety Insurance for Internships

For online learners in countries where we operate physical campuses, we offer health and safety insurance for your internship placements. This ensures that you have the necessary coverage and support during your hands-on learning experience, giving you peace of mind as you take the next step in your career.

10. Become a BUO Ambassador

As a Botho University Online learner, you have the exciting opportunity to become an ambassador for the institution. This role allows you to represent BUO, engage with prospective students, and help shape the future of our online community. It's a great way to develop leadership and networking skills while contributing to the growth of the university.

11. Mentorship and Networking

You'll receive counseling, coaching, and mentoring, alongside access to internship and placement support. Our vast, growing network of global partners offers plenty of opportunities for meaningful connections. Plus, joining our BU Alumni Association on LinkedIn and Facebook connects you to a community of like-minded professionals for networking and career advancement.

12. Flexible Payment Plans

At BUO, we believe in making education accessible. That's why we offer flexible payment options, allowing you to focus on your studies without worrying about your finances.

THE BOTHO UNIVERSITY ONLINE (BUO) ADVANTAGE

Whether you're looking to enhance your qualifications, make a career change, or finish your degree with a flexible and accredited online qualification, Botho University Online provides you with the tools and support to help you thrive. Developed with industry input and designed specifically for the African context, our programs are internationally relevant, ensuring you're equipped with the knowledge and skills to succeed on a global scale. Ready to take the next step in your educational journey? Join us at Botho University Online today and experience the future of learning!

Botho University Online: Globally Recognized, Proudly African.

Botho University 2024 Graduate Tracer Study

with guidance from



96%

of Graduates would recommend Botho University to others



89%

of Graduates found employment based on skills developed at Botho University



88%

of Graduates recommend their programme of study at Botho University to others



85%

of Graduates stated they developed practical skills as part of their programme of study at Botho University



83%

of Graduates said the programme meets industry expectations



83%

of Graduates were satisfied with the academic preparation they received at Botho University



82%

of Graduates who are satisfied with their Botho University education in achieving career goals

OUR VALUED PARTNERS

INTERNATIONAL PARTNERS



SWEDEN



GERMANY



PHILIPPINES



USA



TÜRKIYE

SOUTH AFRICA



INDIA



LOCAL PARTNERS



The list of partners is not exhaustive and subject to change

OUR PROGRAMMES



FACULTY OF BUSINESS & ACCOUNTING

Master of Business Administration (MBA)
Master of Commerce in Human Resource Management
Bachelor of Commerce in Accounting
Bachelor of Business Administration in Business Management
Bachelor of Commerce in Hospitality Management

FACULTY OF ENGINEERING AND TECHNOLOGY

Master of Science in Information Systems Management
Master of Science in Computer Science
Bachelor of Science in Data Science
Bachelor of Science in Network Security and Computer Forensics

FACULTY OF HEALTH AND EDUCATION

Master of Education in Educational Leadership and Management
Master of Education in Curriculum Design and Instruction
Master of Education in Higher Education
Postgraduate Diploma in Higher Education
Bachelor of Education in Primary Education (English Language and Mathematics)
Bachelor of Science in Hospital Administration

FACULTY OF BUSINESS & ACCOUNTING

Master of Business Administration

Programme details:

The programme consists of 11 core (required) modules and 8 Elective Modules. The Research Methodology is a pre-requisite for the Dissertation in the MBA Programme. Some modules may be co-requisite (i.e. such modules are required to be taken together). The number at the end of the module in parenthesis indicates the credit load of the module. 1 credit is equal to 10 hours of learning (guided, inclass and independent combined); therefore a 10-credit module requires on average 100 hours of learning from the student. The MBA Programme will be Block Release and Distance Learning.

Admission criteria

1) Bachelors or Honours Bachelors Degree from a recognised institution.

2) For enquiries and more information please visit our website: www.bothouniversity.com

Graduates of this programme can:

- Manage Large Business
- Establish New Ventures
- Formulate and Implement Strategy for
- Small and large Scale businesses
- Manage Change and Growth in Business
- Address practical business problems
- Make key decisions for business
- Analyse data for making decisions in a Business
- Manage Business
- Manage Imports and Exports

Career Prospects:

- Accountant
- Auditors
- Educationist
- Taxation Consultants
- Finance Managers
- Accounts Consultants
- Middle Level Managers
- Accounts Clerks
- Bookkeepers

Skills Developed:

- Financial management
- Presentation
- Research
- Analytical
- Critical thinking
- Entrepreneurial
- Problem solving
- Microsoft Word, Excel, Powerpoint



SCAN ME

for detailed programme information



Master of Commerce in Human Resource Management

Programme details:

The Master of Commerce in Human Resource Management facilitates the Professional and Corporate development of Business Leaders and Aspiring Business Managers. The programme builds competence in human development, human resource planning, knowledge of social and political contexts of developments, integration of theory into practice and research. The programme achieves this by developing Graduates with Knowledge, Skills and Competencies to take on leadership roles in a range of settings to achieve effective human resource development priorities of emerging economies. The Programme is beneficial in assisting the adoption and implementation of an integrated approach to help build capacity to respond to human and social development most especially in emerging markets as well as help facilitate networks and partnerships.

Admission criteria

- 1) Bachelors or Honours Bachelors Degree from a recognised institution in Business, HRM or related areas
- 2) For enquiries and more information please visit our website: www.bothouniversity.com

Graduates of this programme can:

- Prepare financial statements
- Interpret and analyse financial information
- Interpret and apply financial standards
- Prepare and analyse budgets
- Manage cash flows
- Develop, model and manage risk
- Research on existing problems and develop solutions
- Develop business continuity plans
- Identify and evaluate sources of finance
- Appraise investment projects
- Manage finances
- Plan on taxation issues
- Develop new and innovative ideas and start own enterprises

Career Prospects:

- Accountant
- Auditors
- Educationist
- Taxation Consultants
- Finance Managers
- Accounts Consultants
- Middle Level Managers
- Accounts Clerks
- Bookkeepers

Skills Developed:

- Financial management
- Presentation
- Research
- Analytical
- Critical thinking
- Entrepreneurial
- Problem solving
- Microsoft Word, Excel, Powerpoint



SCAN ME

for detailed programme
information



Bachelor of Commerce in Accounting

Programme details:

This programme helps develop student's understanding of accounting with a deeper look into taxation, auditing, assurance, commerce, finance, strategic management, etc. It is targeted at those who would like to permeate the accounting sector, commercial banking sector, investment sector, or work in public sector companies or accounting firms.

Admission criteria

1) BGCSE/equivalent with of 5 Passes including English and Mathematics.

2) Applicants in possession of a Diploma or Higher Diploma in related field may be given exemptions based on the credit point equivalency.

3) For enquiries and more information please visit our website: www.bothouniversity.com

Graduates of this programme can:

- Prepare financial statements
- Interpret and analyse financial information
- Interpret and apply financial standards
- Prepare and analyse budgets
- Manage cash flows
- Develop, model and manage risk
- Research on existing problems and develop solutions
- Develop business continuity plans
- Identify and evaluate sources of finance
- Appraise investment projects
- Manage finances
- Plan on taxation issues
- Develop new and innovative ideas and start own enterprises

Career Prospects:

- Accountant
- Auditors
- Educationist
- Taxation Consultants
- Finance Managers
- Accounts Consultants
- Middle Level Managers
- Accounts Clerks
- Bookkeepers

Skills Developed:

- Financial management
- Presentation
- Research
- Analytical
- Critical thinking
- Entrepreneurial
- Problem solving
- Microsoft Word, Excel, Powerpoint



Bachelor of Business Administration in Business Management

Programme details:

This program is designed for students seeking to build a career in management, primarily in profit driven sectors. It carefully combines theoretical and practical teaching as part of its training approach, while incorporating work-related learning to ensure the production of graduates with both the knowledge and skills to succeed in the competitive business sector worldwide.

Admission criteria

- 1) BGCSE/equivalent with of 5 Passes including English and Mathematics.
- 2) Applicants in possession of a Diploma or Higher Diploma in related field may be given exemptions based on the credit point equivalency.
- 3) For enquiries and more information please visit our website: www.bothouniversity.com

Graduates of this programme can:

- Address practical business problems
- Make key business decisions
- Influence business strategy
- Analyse business data
- Manage and organize product portfolio
- Appraise corporate projects
- Manage small business
- Plan and implement strategic plan
- Establish new ventures
- Research and development

Career Prospects:

- Operations Manager
- Business Process Orchestration Analyst
- Business Consultant
- Business Lecturer
- Branch Supervisor
- Branch Manager
- Country Manager
- Change Management Consultant

Skills Developed:

- Understanding of facts and figures
- Computer skills
- Presentation skills
- Market intelligence
- Ability to deal with people
- Interest in starting and growing a business



Bachelor of Commerce in Hospitality Management

Programme details:

This programme combines practical and theoretical learning in the Degree programme ensure that graduates are well versed in knowledge, skills and competencies required in the hospitality industry characterised by continuous changes in technology and customer motivations. The course sets a firm foundation for those aspiring to establish careers or become entrepreneurs in the hospitality industry.

Admissions Criteria

1) BCCSE/equivalent with 5 Passes including English and Mathematics.

2) Applicants in possession of a Diploma or Higher Diploma in related field may be given exemptions based on the credit point equivalency.

3) For enquiries and more information please visit our website: www.bothouniversity.com

Graduates of this programme can:

- Manage daily operations in a hotel or restaurant
- Solve day-to-day challenges within a business
- Maximize customer satisfaction for the business

- Make key business decisions
- Influence business strategy
- Analyse business data
- Manage and organize product portfolios
- Appraise corporate projects
- Create and implement strategic plans
- Establish new ventures
- Research and development

Career Prospects:

- Restaurant Managers
- Food and Beverage Managers
- Guest Relations Managers
- Front Office Managers
- Executive Housekeepers
- Rooms divisions Managers
- Reservations Managers
- Sales and Marketing Managers
- Tourism and Hospitality Consultants
- Researchers and Lecturers

Skills Developed:

- Passion for the hospitality industry
- Ability to interact with people
- Ability to be on your feet for long periods
- Understanding facts and figures
- Computer skills
- Presentation skills
- Market intelligence



Master of Science in Information Systems Management

Programme details:

The programme is generally focused on the technical, organizational and management knowledge and skills to qualify them as Information Systems Management professionals. The curriculum is designed to have appropriate modules, both theoretical and practical, at all levels such as the introductory, intermediate, and advanced levels based on the body of knowledge for Information Systems Management. The MSc Information Systems Management programme is designed for the students through a rigorous learning process to prepare professionally trained graduates for the Industry, Education and various avenues which covers an array of contemporary concepts, methods and topics, and hence obtaining useful hands-on expertise essential within the fast-changing environment of Information Systems Management and further affording post graduates an opportunity to pursue related careers or further academic research.

Admissions Criteria

- 1) The minimum admission requirement is a bachelor's degree Honors in Computing/ Computer Science / Information Technology or any computer related field.
- 2) A Post-Graduate Diploma (NCQF level 8) in the field of study (Computing) may also meet admission requirements provided that at least 20 credits at level 8 have been allocated to research methodology within or additional to the qualification.
- 3) Applicants that do not meet the above criteria but possess relevant industry experience will be considered through recognition of prior learning (RPL).

Graduates of this programme can:

- Design and develop network architecture and ensure security of the network
- Acquire knowledge of computer crime through forensic methods.
- Process Legal requirement for collecting evidence.

Career Prospects:

- Information Technology
- Computer Forensics Analysts
- Vulnerability Security research engineer
- Digital Forensics Examiner
- Malware Media Forensics Analysts
- Forensics Auditors
- Network Security Specialists
- Computer Crime Investigators or Security Analysts

Skills Developed:

- Networking Protocols
- Network Architecture and Design
- Routing and Switching
- Network Security
- Wireless Networking
- Network Management and Monitoring
- Network Virtualisation
- Cloud Computing and Networking
- Network Troubleshooting
- Cryptography
- Operating Systems
- Programming and Scripting
- Project Management



Master of Science in Computer Science

Programme details:

Master of Science in Computer Science is an advanced program designed to deepen understanding of computer science principles and their applications. It typically covers core areas such as algorithms, machine learning, computer networking, data warehousing, and software development. Students engage in both theoretical and hands-on learning, often culminating in a research project or dissertation. This program prepares graduates for careers in tech industries, research, or academia, equipping them with advanced skills to solve complex computing challenges and drive innovation in technology.

Admissions Criteria

- NCQF Level 7 (Bachelor's degree) or its equivalent.
- Entry through Recognition of Prior Learning in line with institutional and National policies where necessary.

Graduates of this programme can:

- Develop secure software systems.
- Integrate large-scale software systems.
- Analyse the societal impact of computer systems.
- Manage computing technology resources and projects.
- Conduct research and advance knowledge in computing.

Career Prospects:

- Senior Systems Analysts
- Lead Software Engineer
- Computer Network Manager
- Webmaster
- Manager in Information Technology
- Database Manager
- Director in Information Technology
- Database Administrator/Developer
- IT Solution Architect
- Project Engineer/Manager
- Software Engineer
- System Analyst/Consultant
- System Developer/Engineer
- Web/Mobile Applications Developer
- IT Project Manager

Skills Developed:

- Computing Research Methods
- Object-Oriented Software Engineering
- Operating Systems
- Data Warehousing
- Computer Networking and Communications
- Project management
- Machine Learning
- Web-Engineering
- Grid Computing Systems
- Information Retrieval

SCAN ME

for detailed programme
information



Bachelor of Science in Data Science

Programme details:

This programme is concerned with extracting intelligence from data. This is done by applying cutting-edge techniques from Statistics, Mathematics and Computer Science. The techniques used to understand the modern abundance of data are at the intersection of computing and mathematics, including statistics and machine learning, and there is a high demand in the industry. Furthermore, the qualification will aid in making data-driven decisions in the bid to attain Sustainable Environment and Sustainable Economic Development.

Admissions Criteria

- 1) BGCSE/equivalent with 5 Passes including including English and Mathematics.
- 2) Applicants in possession of a Diploma or Higher Diploma in related field may be given exemptions based on the credit point equivalency.
- 3) For enquiries and more information please visit our website: www.bothouniversity.com

Graduates of this program can:

- Apply data-driven models in various fields like finance, biology, health, education, agriculture, and many other fields
- Communicate in technical and non-technical terms concepts of Data Science in different sectors of the economy
- Develop new data processing models
- Apply developed models to various problems
- Develop multiple programming languages used for expressing solutions
- Safeguard the ethical use of data in all aspects of their profession
- Work effectively in a team
- Communicate effectively
- Develop research skills
- Develop entrepreneurial skills

Career Prospects:

- Data Analyst
- Data Mining Engineer
- Data Architect
- Data Scientist
- Senior Data Scientist
- Business Intelligence Analyst
- Machine Learning Scientist
- Clinical Data Managers

Skills Developed:

- Statistical analysis and computing
- Machine learning
- Deep learning
- Processing large data sets
- Data visualisation
- Data wrangling
- Mathematics
- Programming



SCAN ME

for detailed programme
information



for detailed programme
information

Bachelor of science in Network Security and Computer Forensics

Programme details:

This programme equips students with a strong understanding of computer technology and networks as well as the skills and discipline required to protect these systems and data from malicious manipulation and attacks. With the acquired knowledge they can effectively address the rising need for cyber security in the corporate setting as technology continues to advance and get increasingly adapted in various processes.

Admissions Criteria

1) BGCSE/equivalent with 5 Passes.

2) For enquiries and more information please visit our website: www.bothouniversity.com

Graduates of this programme can:

- Design and develop network architecture and ensure security of the network
- Acquire knowledge of computer crime through forensic methods.
- Process Legal requirement for collecting evidence.

Career Prospects:

- Information Technology
- Computer Forensics Analysts
- Vulnerability Security research engineer
- Digital Forensics Examiner
- Malware Media Forensics Analysts
- Forensics Auditors
- Network Security Specialists
- Computer Crime Investigators or Security Analysts

Skills Developed:

- Networking Protocols
- Network Architecture and Design
- Routing and Switching
- Network Security
- Wireless Networking
- Network Management and Monitoring
- Network Virtualisation
- Cloud Computing and Networking
- Network Troubleshooting
- Cryptography
- Operating Systems
- Programming and Scripting
- Project Management



Master of Education in Educational Leadership and Management

Programme details:

The Master of Educational Leadership and Management programme focuses on training and preparing learners for a range of high level careers that require educational leadership and management skills, competencies and knowledge needed by the learners to become the professionals that they aspire to be. With a master's degree in educational leadership and management, the prospective graduates could secure good jobs in the education, social services, training, and management fields. The programme comprises of twelve core modules and three elective modules. Students must complete 240 credits before graduating from the programme. The research methodology module is a pre-requisite for the research proposal and dissertation modules. Learners are expected to pass research methods before being registered for the dissertation module. MEDLM programme is a two-year programme and will be delivered through Distance and Blended Learning modes. The programme can be studied by both national and international candidates.

Admissions Criteria

- 1) Any recognised Bachelor's Degree (NCQF Level 7)
- 2) A Post-Graduate Diploma (NCQF Level 8) in the same or a cognate field of study.
- 3) For enquiries and more information please visit our website www.bothouniversity.com

Graduates of this programme can:

- Conduct independent inquiry into educational leadership and training or development, to contribute meaningful new knowledge to the field of educational leadership and management.
- Participate in educational leadership activities to expand knowledge of professional practice and enhance own competencies and performance.

- Provide leadership and technical support in the professional development of peers and other practitioners to promote quality in Educational Leadership
- Evaluate professional practice standards, relevant statutes, and regulations to inform the delivery of quality services in accordance with established code of practice.

Career Prospects:

- Teachers at the Primary and Secondary education levels
- Lecturers at the Tertiary education level
- Training and Development Managers
- Postsecondary Education Administrators
- Education Officers and Managers
- Principals of schools
- School Inspectors
- Instructional Coordinators
- Educational costs and financial analysts
- Education Policy Analysts
- Education Policy makers
- Community Service Leaders
- Researchers
- Quality and Strategic Management Experts
- Human Resources Officers and Managers

Skills Developed:

- Innovative Leadership and Management skills
- Research skills
- Problem solving skills
- Critical and analytical thinking skills
- Conflict Management skills
- Ability to work innovatively and in teams
- Good time management skills
- Presentation skills

SCAN ME

for detailed programme information



Master of Education in Curriculum Design and Instruction

Programme details:

The master of Education in Curriculum Design and Instruction focuses on training learners to become teachers in schools and lecturers at institutions of higher learning , curriculum designers and developers , curriculum reviewers , analysts ,evaluators ,researchers and curriculum experts in any education related organisation. The programme has an educational technology module in every semester ,showing the contemporary nature of this particular programme. The programme is made up of eleven core modules and six elective modules. Prospective students are expected to choose two elective modules from the six elective modules, while all core modules are compulsory for all students. Students must complete 240 credits before graduating from the programme, 210 credits cover the compulsory modules, while 30 credits cover the elective components. The research methodology module is a prerequisite for the dissertation module. Learners are expected to pass the research methods module before being registered for the dissertation module. MEDCI programme is a two –year programme and will be delivered through Distance and Blended Learning modes. The programme can be studied by both national and international candidates.

Admissions Criteria

- 1) Any recognised Bachelor's Degree (NQCF Level 7)
- 2) A Post –Graduate Diploma (NQCF Level 8) in the same or a cognate field of study.

Graduates of this programme can:

- Demonstrate an understanding of learning, teaching and assessment concepts
- Show a clear understanding of curriculum development theories.
- Interpret sociological, philosophical, historical and psychological foundations of curriculum, on curriculum design and development.
- Apply knowledge of Microsoft Windows to manage electronic files and folders using applications such as MS Word, MS Excel, Outlook, PowerPoint and Access as tools for teaching. Manage computer and other related resources in their areas of operations
- Develop curricula that address the current needs of society.
- Execute knowledge of educational technology and e-learning to develop and implement activities that promote open, distance and mobile learning
- Implement different principles and practices of curriculum and assessment to inform and guide effective implementation of curriculum and assessment of student's learning.
- Compare the different models of curriculum evaluation in their evaluation of different curricula.

- Analyse curriculum in terms of how it is unpacked into its component parts (e.g. learning, teaching, knowledge, resources), vis-vis evaluating how the parts fit together, in terms of focus and coherence, checking underlying beliefs and assumptions as a way of understanding the curriculum plan better.
- Demonstrate advanced understanding of the research processes and procedures applicable to curriculum development and instruction.
- Design processes of assessment and moderation of students' work
- Demonstrate a deep understanding of the theories and principles that inform effective student learning and be able to translate theory into practice

Career Prospects:

- Secondary school teacher
- Lecturer at the Tertiary Education level
- Curriculum designer and developer
- Curriculum reviewer and evaluator
- Curriculum analyst
- Researcher
- Inspector of Education
- Admissions Officer
- Curriculum Planner
- Head of schools and colleges
- Assessor and Moderator
- Curriculum and Educational Technology Expert

Skills Developed:

- Planning and developing curriculum
- Ability to critically analyse and develop curriculum
- Good presentation skills
- Ability to apply educational technology in curriculum development and implementation
- Critical thinking, innovative and problem solving skills
- Research skills
- Good time management and leadership skills
- Ability to work in teams

SCAN ME

for detailed programme information



Master of Education in Higher Education

Programme details:

The Master of Education in Higher Education (MEDHE) is a teaching qualification which prepares learners for a career in the teaching profession. Through this programme, the learners will be equipped with the knowledge, skills and competencies to enable them demonstrate a deep understanding of the pedagogy, assessment and moderation in education, curriculum design and instruction, and quality frameworks in higher education. The programme consists of 9 core (required) modules and 3 elective modules. Some modules may have pre-requisites. The research module is a prerequisite for the dissertation module. This programme is a teaching qualification therefore, all prospective learners in the programme are expected to do their practical teaching exercise before graduation from the programme. MEDHE programme is a two-year programme and will be delivered through the Blended and Distance Learning modes. The programme can be studied by both national and international students.

Admissions Criteria

1) Applicants are expected to have completed a Bachelors Degree, preferably up to Honors level from a recognised institution.

2) For enquiries and more information please visit our website: www.bothoUniversity.com *Please note that this programme is a teaching qualification which prepares learners to become qualified and professional teachers therefore, all students in this programme must do their practical teaching (Teaching Pr

Graduates of this programme can:

- Evaluate and apply teaching, learning, assessment and moderation processes in higher education teaching and learning
- Analyse the philosophical, psychological and sociological issues in education.
- Design high-quality multimedia e-learning solutions based on sound pedagogy and a detailed understanding of the learner.
- Analyse quality assurance methods employed in higher education settings
- Design curriculum models and apply them to relevant teaching situations including planning lessons and practice teaching in a higher education environment
- Examine the changing role of a teacher and the role of Higher Education in the contemporary society and reflect on teaching and learning issues in higher education.

- Examine the governance, leadership and management structures in higher education institutions
- Demonstrate lifelong research skills that will empower them to continually seek and apply new knowledge throughout their career
- Evaluate the behaviour of individuals in relation to their jobs, their work groups and their organizations
- Demonstrate a deep understanding of the elements of special needs education in relation to teaching students with special needs

Career Prospects:

- Higher Education Lecturer
- Education Administrator
- Quality Assurance Manager
- Assessment Manager
- Student Affairs Officer /Manager
- Education Manager and Leader
- Researcher
- Educational Planner and Policy Analyst
- Education Officer and Manager

Skills Developed:

- Pedagogical Knowledge and Skills
- Presentation Skills
- Listening skills
- Problem solving skills
- Good classroom management skills
- Interactive teaching skills and patience
- Critical thinking skills
- Good leadership and management skills
- Research skills
- Ability to work innovatively and in teams
- Good time management skills
- Good oral and written communication skills



Postgraduate Diploma in Higher Education

Programme details:

The Post Graduate Diploma in Higher Education (PGDHE) is a teaching qualification which prepares learners for a career in the teaching profession. Through this programme, the learners will be equipped with the knowledge, skills and competencies to enable them demonstrate a deep understanding of the pedagogy, assessment and moderation in education, curriculum design and instruction, and diversity among learners in education. The programme consists of seven core (required) modules and three elective modules. Some modules may have pre-requisites. This programme is a teaching qualification therefore, all prospective learners in the programme are expected to do their practical teaching exercise before graduation from the programme. PGDHE programme is a one –year programme and will be delivered through the Blended and Distance Learning modes. The programme can be studied by both national and international students.

Admissions Criteria

- 1) A Bachelor's Degree from a recognised University (NQCF Level 7) **OR**
- 2) A Bachelor's Degree and a Postgraduate Certificate in Education. **OR**
- 3) A Bachelor's Degree and a Postgraduate Certificate in Higher Education will be an added advantage **OR**
- 4) A 120 Credit Level 7 Advanced Diploma in a cognate specialisation
- 5) For enquiries and more information please visit our website: www.bothouniversity.com *Please note that this programme is a teaching qualification which prepares learners to become qualified and professional teachers therefore , all students in this programme must do their practical teaching (Teaching Practice / PPA2 module) in order to graduate .

Graduates of this programme can:

- Demonstrate an understanding of the issues, theories and principles that underpin the curricular and pedagogical practices in Education
- Demonstrate the ability to select and use appropriate technology for integration in the classroom to support the teaching and learning .
- Design assessment instruments that appropriately capture the students' level of achievement in relation to the set goals and objectives

- Demonstrate the ability to address diversity of individual needs through differentiation of content and delivery process in higher Education
- Demonstrate lifelong research skills that will empower them to continually seek and apply new knowledge throughout their career
- Apply learning, teaching and assessment practices through the theory and practice of quality teaching and learning principles
- Evaluate the leadership and management structures in educational institutions to ensure effective attainment of institutional goals and objectives

Career Prospects:

- Higher Education Lecturer
- School Teacher
- Education Administrator
- Quality Assurance Manager
- Assessment Manager
- Student Affairs Officer /Manager
- Education Manager and Leader
- Researcher
- Curriculum developer and Implementer
- Educational Planner and Policy Analystist
- Education Officer and Manager

Skills Developed:

- Pedagogical Knowledge and Skills
- Presentation Skills
- Listening skills
- Problem solving skills
- Good classroom management skills
- Interactive teaching skills and patience
- Critical thinking skills
- Good leadership and management skills
- Research skills
- Ability to work innovatively and in teams
- Good time management skills
- Good oral and written communication skills



Bachelor of Education in Primary Education (English Language and Mathematics)

Programme details:

The Bachelor of Education (Primary Education) programme offered at Botho University focuses on training and preparing learners for a range of valuable careers that require educational skills, competencies and knowledge needed by the learners to become the professionals that they aspire to be. The programme is designed for both pre-service and in-service teachers with specializations in English language and

Mathematics. The programme is specifically designed to align with current policy initiatives regarding retooling and re-skilling teachers, as well as preparing fresh entrants into the teaching profession. With a bachelor's degree in primary education, prospective graduates could secure good jobs in the education, social services, training, and research fields.

Admissions Criteria

1) BCCSE/equivalent.

2) For enquiries and more information please visit our website: www.bothouniversity.com

Graduates of this programme can:

- Master the art of student -centered learning and teaching using modern technologies.
- Competently apply 21st century teaching and learning approaches.
- Conduct action research into the areas of primary education with a focus in English language, Mathematics and Science.
- Pursue continuous professional development in educational activities to expand their knowledge of professional practice.
- Demonstrate the ability to effectively assess learning.
- Apply problem solving skills in the different areas of specializations of primary education.
- Be eligible to register with professional bodies both at local and international levels.
- Demonstrate understanding of effective pedagogical practices in primary education.

Career Prospects:

- Teachers of Basic Education
- Remedial Teachers
- Specialist Subject Teachers of Basic Education
- Education Researchers
- Curriculum Development and Evaluation Officers
- Education Officers
- Education Counsellors
- School Inspectors
- Instructional Coordinators
- Language Interpreters
- Basic Education Policy Analysts
- Basic Education Policy Developers
- Basic Education Community Service Leaders

Skills Developed:

- Written and verbal communication skills
- Listening skills
- Problem solving skills
- Good classroom management skills
- Interactive teaching skills and patience
- Ability to relate well with, and teach learners with learning difficulties
- Ability to teach mixed- ability learners
- Critical thinking skills
- Good leadership and management skills
- Expertise in specific subjects of specialization
- Ability to work innovatively and in teams
- Good time management skills

SCAN ME

for detailed programme
information



Bachelor of Science in Hospital Administration

Programme details:

This programme focuses on equipping students with the knowledge and skills required to effectively manage healthcare facilities and services. This program combines business management principles with a deep understanding of the healthcare industry. Graduates are prepared for diverse roles within the healthcare sector, ensuring the efficient and effective operation of hospitals and other healthcare facilities.

Admissions Criteria

1) BGCSE/equivalent with 5 Passes.

2) For enquiries and more information please visit our website: www.bothouniversity.com

Graduates of this programme can:

- Be equipped with knowledge of business, healthcare management and leadership
- Healthcare Economics; strategic planning and healthcare systems
- Provide insights into healthcare systems, financial management, and human resources
- Be prepared to lead and navigate the complexities of healthcare organizations



Career Prospects:

- Health manager
- Office manager
- Practice administrator
- Program administrator/Manager
- Healthcare Administrator
- Healthcare Management Practitioner
- Clinical Management
- Management Consultant
- Health Insurance Professional
- Health Information Manager
- Public Health Professional
- Managed Care Analyst
- Hospital Director of Admitting
- Pharmaceutical Sales Manager
- Health IT manager

Skills Developed:

- Healthcare Knowledge
- Administrative and Organizational Skills
- Communication Skills
- Leadership and Management
- Financial Management
- Health Information Management
- Quality Improvement and Patient Safety
- Human Resources Management
- Strategic Planning
- Ethical Decision-Making
- Interpersonal Skills
- Public Health Knowledge
- Regulatory Compliance
- Crisis Management
- Technology Proficiency



GENERAL ADMISSIONS INFORMATION

Points	UK IGCSE, UK COSC, Botswana BCCSE, Lesotho LGCSE, Eswatini SOCSE, Namibia NSSC Ordinary, Namibia NSSC O-Level, South Africa Senior Certificate SC	UK GCSE/GC E O-Level	South Africa NSC	West Africa WASSCE/SSSCE/GBCE	UK GCE AS-Level, Namibia NSSC AS-Level, South Africa Senior Certificate HG	IBDP Standard-Level	UK HIGCSE, Namibia NSSC Higher	UK GCE A-Level	IBDP Higher-Level	Points
12								A	7	12
11								B	6	11
10					A, a	7	1	C	5	10
9					B, b	6	2	D	4	9
8	A*, A	A*, A, 9, 8, 7	A+, A, 7	A1	C, c	5	3	E	3	8
7	B	B, 6, 5	B, 6	B2, B3	D, d	4			2	7
6	C	C, 4	C, 5	C4, C5, C6	E, e	3	4	N, O, Sub	1	6
5	D	D, 3	D, 4	D7		2				5
4	E	E, 2	E, 3	E8						4
3										3
2										2
1										1
0	F, G, U	F, G, U1	F, G, 2, 1	F9	F, f	1	U			0

1. Applying to Botho University

Before applying to Botho University, students are encouraged to take time out to familiarise themselves with all the programmes on offer. Applicants must meet all the relevant minimum requirements for the programme of study they wish to study. It is also important for applicants to assess whether the programme they choose interests them and that they want to make a career out of it. Our friendly Admission Team Counsellors will provide information needed about the programmes and assist applicants to make informed choices. Details on programmes are available on our website:

www.bothouniversity.com

2. How to calculate points

The admission point system is used to measure your academic achievement based on your school-leaving results. Your school-leaving subject grades or percentages are converted into points as per the table above and based on your qualification. These points are added up to arrive at the number of points you have obtained.

3. Important points to remember when applying

- All students can apply in person or using the online application form available on the website. Please read the "Steps to Apply" document available on the application portal before applying.
- Clear certified copies of all relevant educational certificates.
- Clear certified copies of passport/identity card.
- Please read the Fee Structure and Policy document available on the website before applying.
- Should you have any doubts on the application process please contact our admissions department for further assistance.

SCAN ME

for detailed programme information



SCAN HERE TO
SUBMIT YOUR
APPLICATION

NURTURING STUDENT SUCCESS

OUR EMPLOYABILITY SERVICES

**Experience #Vibrance at Botho University:
Offering an #enriching #transformational
#globalstandard student life experience**

Any student considering their long term career options can be rest assured that Botho University's highly industry relevant programs of study will help them achieve all their academic goals. However students must also consider Botho University for its strong focus on offering an unforgettable and positive university experience during their time with us.

Botho University offers relevant, high quality, innovative and digitally driven support services to ensure that all students have an extremely meaningful and fulfilling experience with us. The Student and Alumni Affairs Department or SAAD is the department that offers a host of wellness, welfare, employability and entrepreneurship related services to all students to ensure they receive an amazing return on their investment by being a student of Botho University. The SAAD ensures that Botho University offers an environment that fosters a highly practical, deeply engaging learning experience through a nurturing, positive and caring environment. We are a department that is deeply committed to **#StudentSuccess** through all our services.

Academic and Psychosocial Counseling Services:

SAAD offers the services of trained and well qualified counselors for students to ensure their physical, mental, emotional and academic well being while at Botho University. The Counselors offer their services in a secure and confidential manner to help students cope with any challenges they may be facing.



Special Needs support:

SAAD has the services of a highly trained and well experienced Special Needs Coordinator who is dedicated to managing the welfare of students with special needs. In line with Botho University commitment to offering an inclusive environment to all students, special needs students receive a host of services including but not limited to dedicated teaching aids, individual education plans, classroom support, special assistance for assessments and evaluation and access to a well equipped resource centre. All students irrespective of gender, race, ethnic origin or ability are welcome at Botho University.

Health and Wellness:

SAAD is responsible for operating all health and wellness services including clinic services. The institution also has contracts with emergency medical service providers for emergency evacuation and prompt medical attention at the nearest registered healthcare facility for all students and staff on campus. The institution also has a qualified and trained nurse to offer assistance with minor illness, referrals to major clinics and hospitals and conduct workshop and awareness programmes in partnership with other external health care providers in the country. These include HIV and AIDS interventions, blood donations, male circumcision, cancer awareness, alcohol and substance abuse and other such important campaigns to build a healthy generation of learners on campus.



Sports Culture and Recreation:

SAAD is responsible for hosting a variety of sporting and non sporting clubs on campus to provide students opportunities for discovering their talents and pursuing a variety of activities aimed at their holistic development beyond the confines of the classroom. The institution has access to well equipped sporting facilities either on campus or through collaborations with external providers. The institution invests into memberships with a number of reputable sporting associations across the country to offer students the opportunities to participate in sporting events between institutions and at national and international level. Trained and passionate sports and club coaches are appointed by SAAD to manage all registered clubs and offer dedicated training for superior performance. Botho University has over the years produced many national and international athletes and non sporting club achievers due to its emphasis on providing an environment for students to express themselves through sport, clubs and a host of recreational activities. SAAD encourages creativity and talent at all levels and provides students ample opportunities and support to explore their interests.



Internship Guidance and Support:

SAAD prides itself on being a leader in offering a host of path breaking career development services to all students. All students are expected to complete a credit bearing mandatory internship.

SAAD is fully committed to preparing students from the moment they enter the university to prepare them for maximizing their internship experience including CV preparation, mock interviews, internship workshops prior to the start of internship to align academic and professional development expectations, support to students in finding relevant internships through our vast network of industry partners, handling all administrative matters related to internships and overall ensuring that all students utilise their internship not just to gain academic credit but also to emerge industry ready and with valuable work experience. SAAD has ensured that Botho University has a 100% internship placement rate for more than 10 plus years of offering academic internships to all students in all countries of operation.

Community Engagement:

SAAD is responsible for all community engagement activities at Botho University. This is in line with developing students who are socially responsible individuals using their education for the greater good and finding solutions to the problems of the local community.

SAAD constantly creates opportunities for our students to participate in volunteering activities, community service and development events, empowerment of disadvantaged, underprivileged and economically constrained sections of society through training, workshops, donations, bootcamps, awareness campaigns etc.

We establish long term partnerships with communities and NGOs to offer our students an insight into their challenges and use critical thinking and problem solving skills to participate and implement programs that try to mitigate these issues. This is all done in fostering a spirit of Botho and compassion in all our students during their tenure of study with us.

Student Exchange:

Botho University being a pan-African university has many international agreements with highly reputable quality universities globally for purposes of student exchange.

SAAD offers this as one more career development opportunity for eligible students to be able to study abroad for a semester at any one of our partner universities based in Germany, Sweden, Turkey, India, or South Africa. We have been sending Botho University students to study on exchange since 2016.

SAAD invests a lot of time in nurturing these exchange opportunities to ensure students gain maximum exposure. Botho University has also had the unique privilege of being able to successfully host international students from our university partners in Sweden, Germany, and South Africa specifically at our Botswana campus bringing diversity and intercultural collaboration to our local students. Through student exchange, Botho University offers an unbeatable, multicultural, and international university atmosphere at par with any global university to our students. We continue to grow our network to partnerships with universities in new countries to keep up with the growing demand for student exchange on campus.

Alumni Relations:

Alumni engagement is any educational providers' return on investment. Alumni are an important part of the Botho community and SAAD prioritizes alumni engagement. SAAD actively works to establish lifelong connections with our graduates primarily through our alumni association Facebook page with more than 5000 members and growing.

The Alumni association offers immense value to members by constantly advertising opportunities for professional development including scholarships to study abroad, placement and volunteer opportunities, exclusive access to career development events, expert speakers, training workshops, webinars on topics of interest, constant updates on developments at Botho University as a panafrikan provider of quality education, networking platforms, alumni discounts and benefits, tracer studies and so much more.

SAAD ensures that once you enter the Botho community, you are a lifelong member and have access to immense opportunities exclusive to Botho University graduates.

Graduate Placement Support:

SAAD at Botho University dares to go where few institutions may venture. In light of the high unemployment rates in the countries where we operate, Botho University's strategic focus on employability continues to drive SAAD's initiatives. The department actively and aggressively engages with industry to formalise partnerships that offer assured placement support to our students and graduates. SAAD has developed a reputation of offering this ground breaking service over the past 5 years to employers who are seeking fresh and entry level graduates allowing them to save time and focus on finding the best candidates.

SAAD handles all administrative matters related to placement such as understanding employer requirements, advertising it online to our highly responsive alumni community, shortlisted candidates, setting up interviews for the employer and following up to ensure the employers' requirements are fulfilled. All of this with the sole purpose of leveraging Botho University networks with industry for the benefit of our graduates seeking meaningful engagement. SAAD also conducts highly successful annual employability fairs to bring together employers and job seekers, even conducting them on virtual interactive platforms, a first for the entire Southern African region. Through SAAD's efforts, Botho University has placed 100s of Botho graduates with reputable employers over the years.



Virtual internships at Botho University - Digitally Transforming Education by bringing international employers to embrace African Potential

Botho University is digitally transforming education. All our students are required to complete an industry relevant internship during their program of study. Botho University students can now complete their internship by being placed with an international employer through the efforts of the Students and Alumni Affairs Department. We offer virtual internships through our partnership with two of the world's leading virtual internship agencies namely Virtual Internships and Next Step Connections.

Virtual Internships offers our students guaranteed remote internships with companies across the globe.

Next Step Connections offers our students guaranteed remote internships with companies in Asia.

In addition to the immense benefits of working with international employers on cutting edge projects and technologies not available locally, virtual internships also provide Botho University students with additional advantages such as career development courses leading to certifications, dedicated career coaching, exclusive professional development sessions with leading global experts and a lifelong membership to an international community of virtual internship students from universities across the globe.

Botho University students have excelled at virtual internships opportunities since inception bringing in global recognition for us for using technology to provide global opportunities to our students and transforming their scope of possibilities. Botho University students are now able to aspire for international employment and are at a distinct advantage having had global exposure and demonstrating their digital literacy skills - a must have 21st century employability skill.

Entrepreneurship Lab:

SAAD offers the services of our ELab or Entrepreneurship Lab to enterprising students and graduates of Botho University who have aspirations of being entrepreneurs.

This is our inhouse incubator established in 2016 which offers early stage business incubation services. SAAD has cultivated a host of external partnerships in the local entrepreneurship ecosystem to also offer added value and a host of benefits to our students and graduate entrepreneurs including seed funding, mentorship, expert training, networking opportunities, access to national and international pitching competitions, high quality custom built ideation and coworking spaces through our external partners and linkages to international communities of aspiring entrepreneurs.

SAAD has been repeatedly invited by many leading external organisations on national and international platforms to share our expertise on entrepreneurship development. Botho University ELab graduates have gone on to establish successful businesses and represented us and the nation winning themselves accolades on many international pitching competitions.



REMOTE INTERNSHIPS STATISTICS AT BOTHO UNIVERSITY

Botho University is the

1ST
**INSTITUTION
IN AFRICA** 

to offer remote internships for academic credit

Remote Internships offered since

2021 

to eligible Botho students from all campuses of Botho University across Africa

Nearly

270 

Students placed on remote internships up to date



Remote Internship Employers from

33+ COUNTRIES
GLOBALLY

100% 

Guaranteed remote internships placement

50% 

of the Botho University Virtual Internship group received post internship offers

**EMPLOYERS WOULD
CONSIDER**

78%

of remote interns for a full time position

REMOTE INTERNSHIP EMPLOYERS INCLUDE

- Trinidad and Tobago
- Mozambique
- Norway
- Canada
- Belgium
- Hong Kong
- Cote D'Ivoire
- Nigeria
- China
- Malaysia
- Vietnam
- Singapore
- USA
- Netherlands
- South Africa
- Nigeria
- Kenya
- Argentina
- New Zealand
- Bangladesh
- South Korea
- India
- United Kingdom
- France
- Thailand
- Turkey
- UAE
- Japan
- Malta
- Georgia
- Cameroon

BOTHO UNIVERSITY ONLINE 

BOTHO
UNIVERSITY
VIBRANCE • INNOVATION • IMPACT

Botho University also offers fully accredited online programs of study. #TheFutureIsDigital

BACHELORS DEGREES

- BCom in Accounting
- BBA in Business Management
- BSc Network Security and Computer Forensics
- BSc Data Science
- BCom in Hospitality Management
- BSc in Health Information Management
- BSc Hospital Administration
- Diploma in Occupational Health and Safety
- BEd in Primary Education

MASTERS & POST GRADUATE DEGREES

- PGDHE (Post Graduate Diploma in Higher Education)
- Master of Business Administration
- MCom in Human Resource Management
- MSc Information Systems Management
- MSc Computer Science
- MEd in Higher Education
- MEd in Curriculum Design and Instruction
- MEd in Educational Leadership and Management

Globally Recognized
proudly African

APPLY NOW

online.bothouniversity.com



BOTHO UNIVERSITY ONLINE 

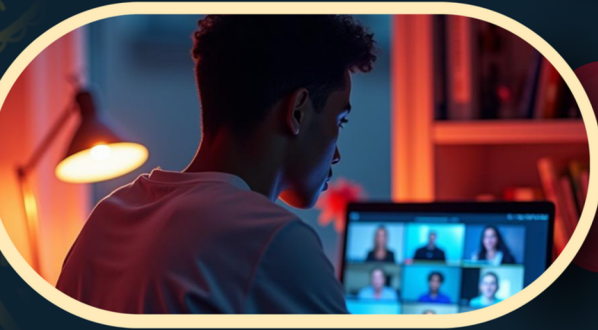
BOTHO
UNIVERSITY
VIBRANCE • INNOVATION • IMPACT



OUR ONLINE STUDENTS ELIGIBLE FOR
INTERNATIONAL
EXCHANGE

OUR ONLINE STUDENTS UNLOCK LIFE LONG

CAREER
SUPPORT



OUR ONLINE STUDENTS ENJOY A
CAMPUS EQUIVALENT
EXPERIENCE

Botho University also offers fully accredited online programs of study. #TheFutureIsDigital

Globally Recognized
proudly African

APPLY NOW

online.bothouniversity.com

BOTHO UNIVERSITY ONLINE 

BOTHO
UNIVERSITY
VIBRANCE • INNOVATION • IMPACT



WE OFFER
**FLEXIBLE
PAYMENTS**
SO YOU CAN FOCUS ON LEARNING

OUR ONLINE STUDENTS BUILD LASTING
**ALUMNI
CONNECTIONS**



START WHEN ITS RIGHT FOR YOU!
**MULTIPLE ADMISSION
INTAKES**
 JAN | MAR | MAY | JUL | SEP | NOV

Botho University also offers fully accredited online programs of study. **#TheFutureIsDigital**

Globally Recognized
proudly African

APPLY NOW
online.bothouniversity.com

BOTHO UNIVERSITY ONLINE 

BOTHO
UNIVERSITY
VIBRANCE • INNOVATION • IMPACT



WITH YOU EVERY STEP OF THE WAY
ONGOING
EXPERT
GUIDANCE

OUR INNOVATIVE
LEARNING
MANAGEMENT
SYSTEM



OUR ONLINE STUDENTS ACCESS
EXCLUSIVE
SCHOLARSHIPS

Botho University also offers fully accredited online programs of study. #TheFutureIsDigital

Globally Recognized
proudly African

APPLY NOW

online.bothouniversity.com

BOTHO UNIVERSITY

BOTHO UNIVERSITY
ONLINE 

BOTHO
UNIVERSITY
VIBRANCE • INNOVATION • IMPACT

2025 ADMISSIONS OPEN!

Experience Transformation

FACULTY OF ENGINEERING AND TECHNOLOGY



- » Master of Science in Computer Science
- » Master of Science in Information Systems Management
- » Bachelor of Science in Data Science
- » Bachelor of Science in Network Security & Computer Forensics

FACULTY OF BUSINESS AND ACCOUNTING



- » Masters of Business Administration
- » Masters of Commerce in Human Resource Management
- » Bachelor of Commerce in Accounting
- » Bachelor of Business Administration in Business Management

FACULTY OF HEALTH AND EDUCATION



- » Masters of Education in Higher Education
- » Masters of Education in Curriculum Design and Instruction
- » Masters of Education in Educational Leadership and Management
- » Postgraduate Diploma in Higher Education
- » Bachelor of Science in Hospital Administration



Apply Today!



online.bothouniversity.com



#WhereEvery
Student Thrives